

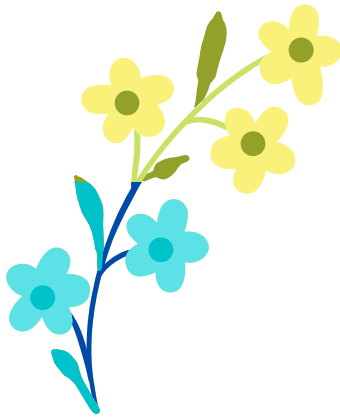


COLOR CHANGING FLOWERS

Learn how water travels through a cut flower.

Materials

Flowers, preferably light colored
Vase, tall glass, or bowl
Warm water
Food coloring
Scissors



Procedure

- Mix enough food coloring into the water to make it very dark. For a cup of water, use about 30 drops of food coloring.
- Cut the stems of the flowers at a slant. The shorter the stems are, the more quickly the flowers will change color.
- Put the stems of the flowers in the water and leave them for at least an hour. The longer the flowers are in the water, the more the color will change. Try leaving them overnight.

Results

The food coloring dyed the flowers, first through the stem and "veins," then through the rest.

Why?

When flowers are planted in the ground, the roots suck up water and filter it before it spreads through the plant. Cut flowers can take in water from the stem, but can't filter the water without the roots. Once water is sucked up by the stem, it cycles through the entire plant. If the water has food coloring in it, it will dye the flower as the water makes its way through it.