



SEDIMENTARY SANDWICH

Demonstrate a sedimentary rock formation with household items.

Materials

- 2 slices of bread
- Crunchy Peanut Butter
- Jelly
- Knife (for spreading)
- A plate



Procedure

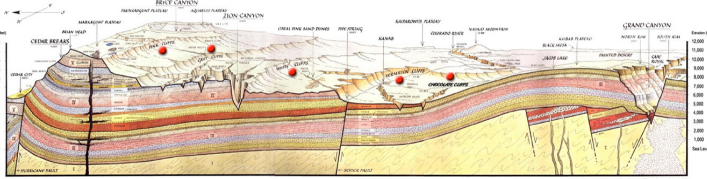
- Lay one slice of bread on a plate
- Use the knife to spread a layer of peanut butter on the slice of bread.
- Add a layer of jelly on top of the peanut butter layer.
- Place the second slice of bread on top of the jelly layer.
- Eat the sandwich.

Caution: Never taste anything in a laboratory setting unless you are sure that there are no harmful chemicals or materials.

Results

A sandwich with a series of layers has been constructed.

The Grand Staircase



Take a look at this diagram of the sedimentary rock formations at the Grand Staircase, a site near the Grand Canyon. How does it look similar to your sandwich?

Image credit: National Park Service

Why?

Sedimentary rocks are formed from loose particles that have been carried from one place to another and redeposited. These rocks usually are deposited in a series of layers similar to the layers in the sandwich. Each layer can be distinguished by differences in color, texture, and composition. The oldest layer and lowest bed is deposited first and stays on the bottom. The youngest layer is at the top. The layers over a period of time become compacted and cemented together to form solid rock structures. You can see this in how some of the peanut butter and jelly may soak into small holes in the bread.